

# Look!

The Annexe  
Drummygar Farm  
Carmyllie  
DD11 2RA



## Building Plot





Forfar : 01307 463657  
Arbroath : 01241 439442  
[www.letangus.com](http://www.letangus.com)  
[enquiries@letangus.com](mailto:enquiries@letangus.com)



proposed south west elevation @ 1:100



proposed south east elevation @ 1:100



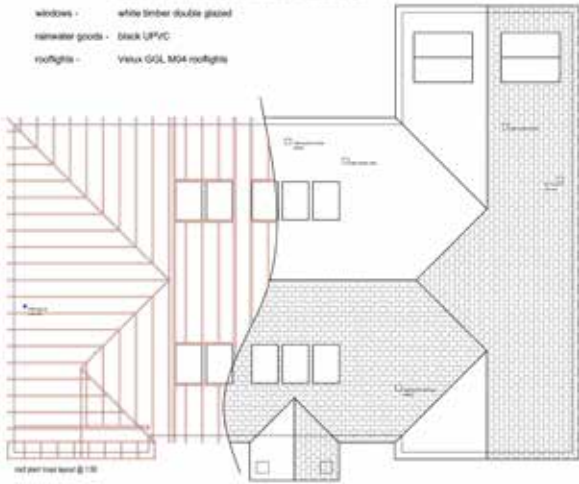
proposed north east elevation @ 1:100



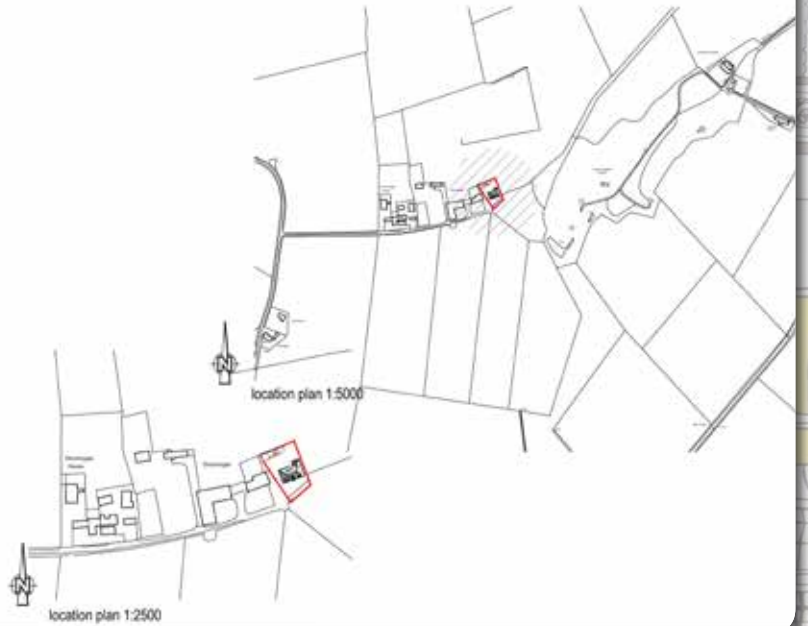
proposed north west elevation @ 1:100

Proposed finishes

- walls - wet dash render with reclaimed stone base course  
outbuilding walls to be re-built with reclaimed stone
- roof - reclaimed slate with concrete tile ridge and hip  
outbuilding roof replaced and finished with reclaimed slate
- windows - white timber double glazed
- interior goods - black LVPVC
- rooflights - Vitex GGL M04 rooflights

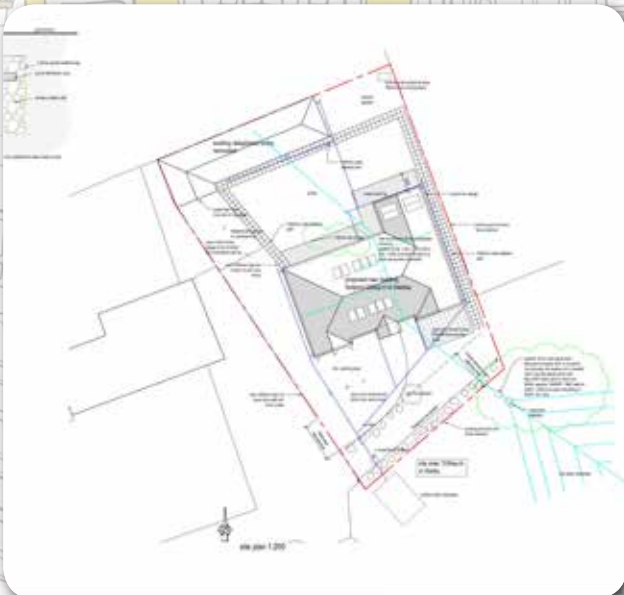


not part of plan @ 1:100



location plan 1:5000

location plan 1:2500



site plan 1:200

- Full Planning Permission
- Approx 1334 Sq.Ft.
- Excellent Open Views
- Former Bothy



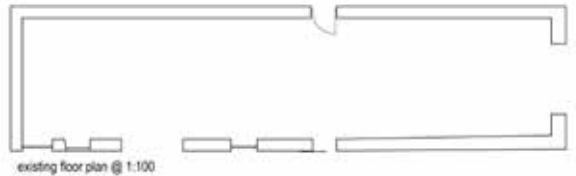
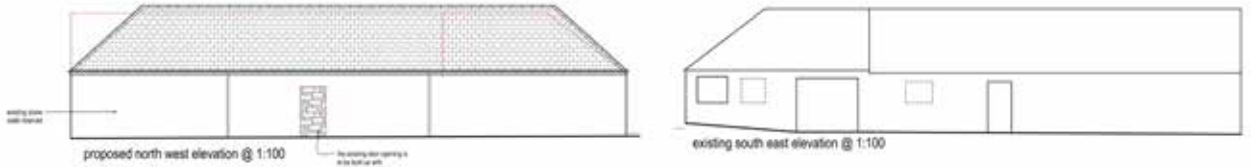
[www.Facebook.com/Wardhaugh](http://www.Facebook.com/Wardhaugh)



[www.Twitter.com/Wardhaugh](http://www.Twitter.com/Wardhaugh)



View Video Tour On YouTube



**FREE MARKET APPRAISALS  
COMPETITIVE FEES  
CONTACT US NOW**

FORFAR: 01307 463657

ARBROATH: 01241 439442

**DISCLAIMER**  
Property particulars are for guidance only and do not form any part of a contract or agreement.

Forfar Office: 38-40 East High Street, Forfar, DD8 2EG  
Arbroath Office: 7 Allan Street, Arbroath, DD11 1EB